

4.0 long-term stabilnost

50 dana inkubacije NAD⁺/NADH u mraku pri sobnoj temp.

- različiti referenti puferi i ChCl:U-10% (1:2)
- 2. paralele

- 0. dan : 30.3.2021.
- 50. dan : 18.5.2021.

NAD⁺:

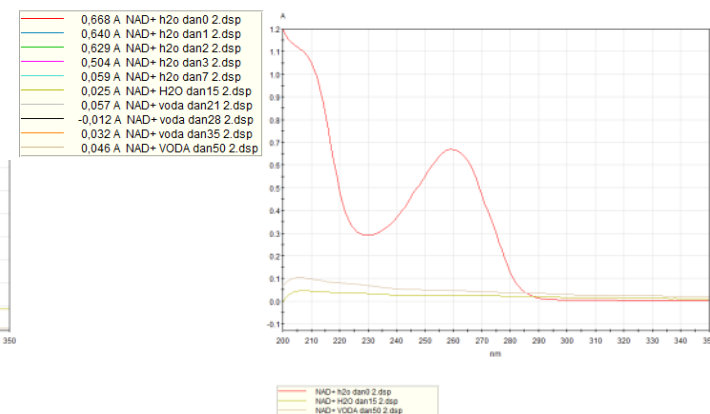
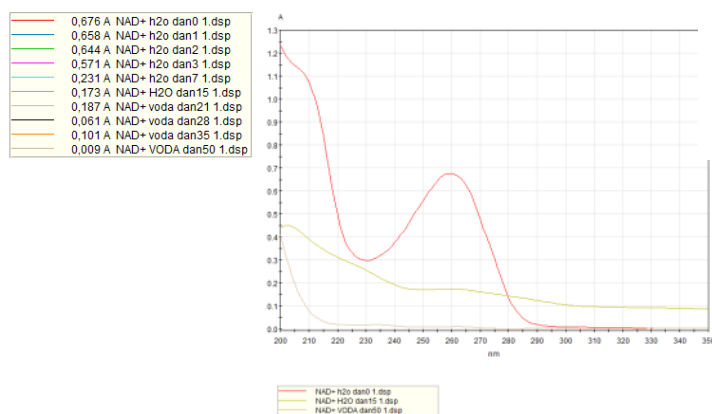
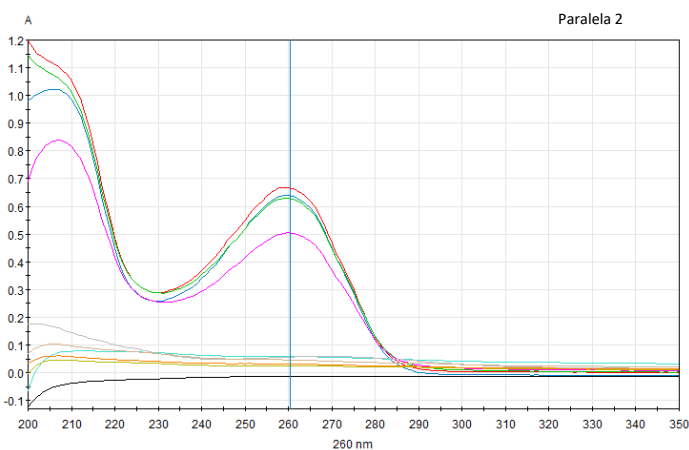
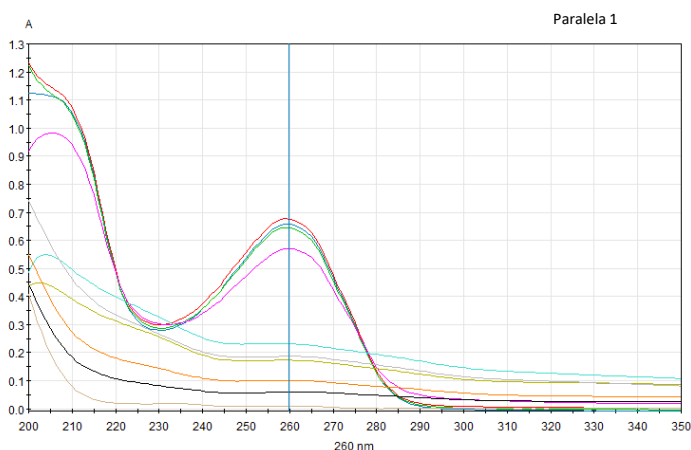
H ₂ O	7,15
PBS	
TRIS-HCl	7
ChCl:U (1:2) - 10% H ₂ O	8,66

NADH:

ChCl:U (1:2) - 10% H ₂ O	8,66
GlyPP	9,1
TRIS	9,5
Gly NaOH	9,98

NAD⁺ u H₂O

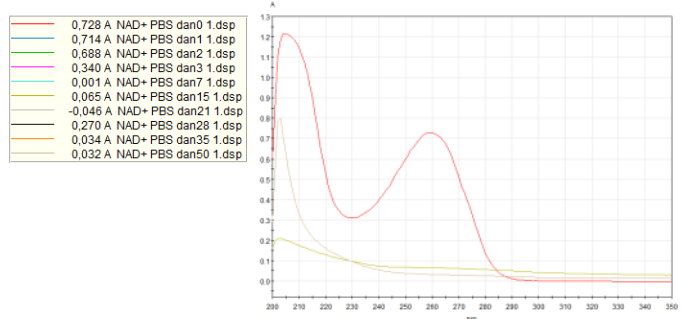
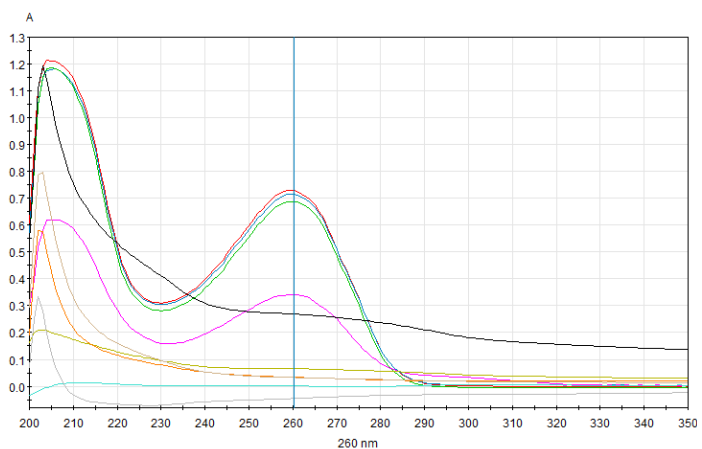
- pH= 7,15



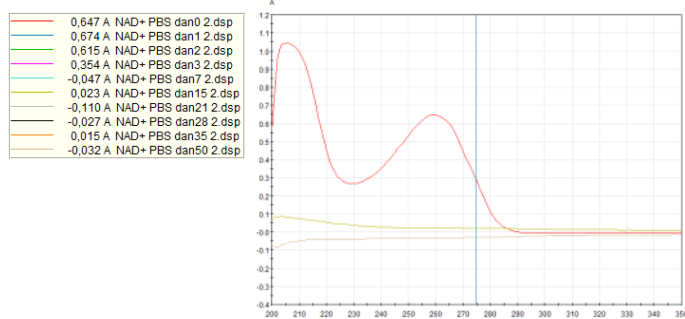
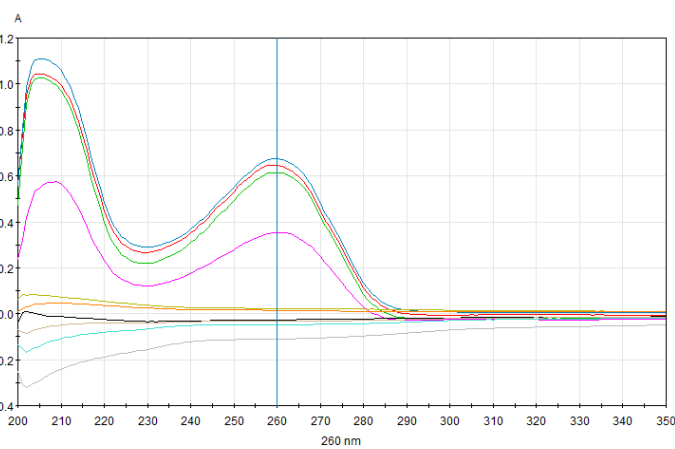
NAD⁺ u PBS

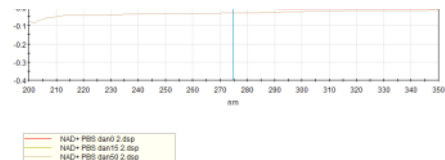
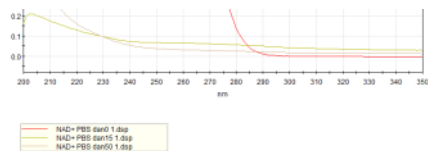
- pH= 7,2-7,4

Paralela 1



Paralela 2

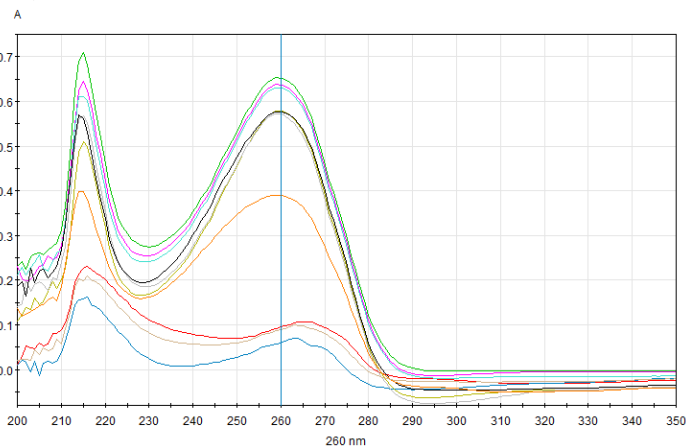




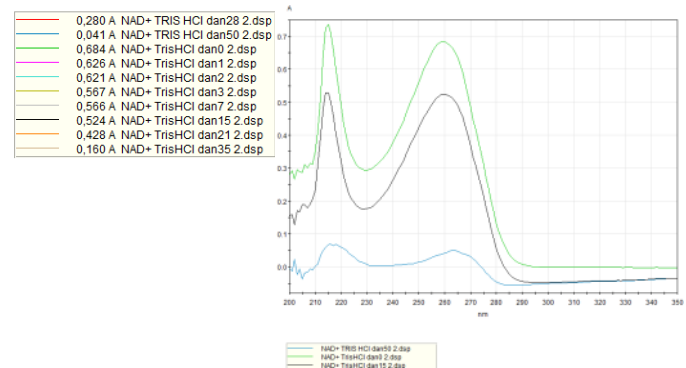
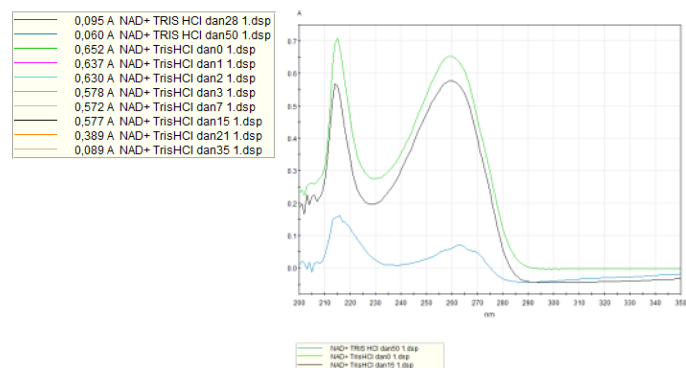
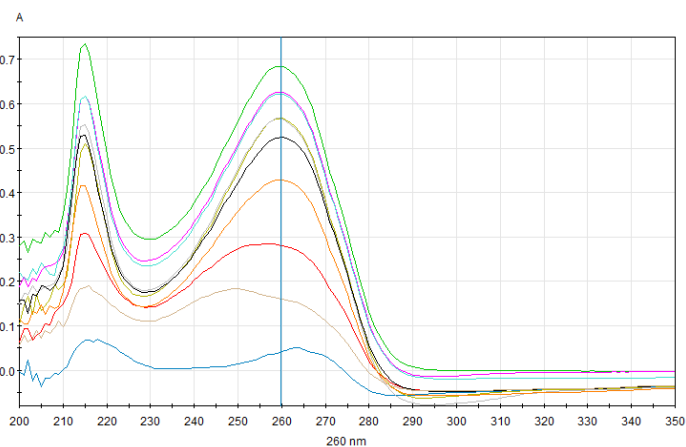
NAD⁺ u Tris-HCl

- pH= 7,15

Paralela 1



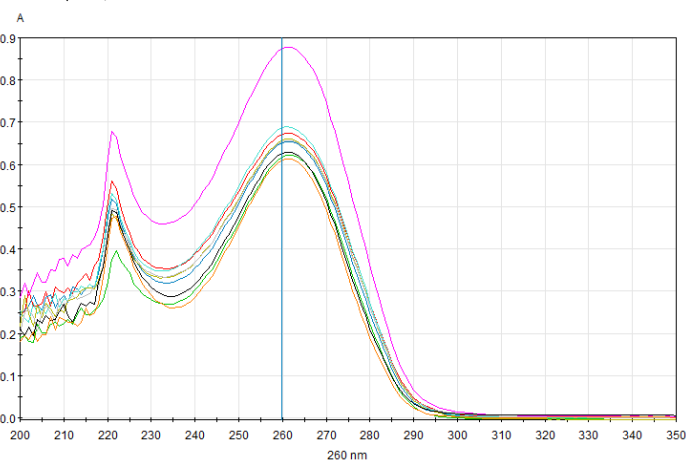
Paralela 2



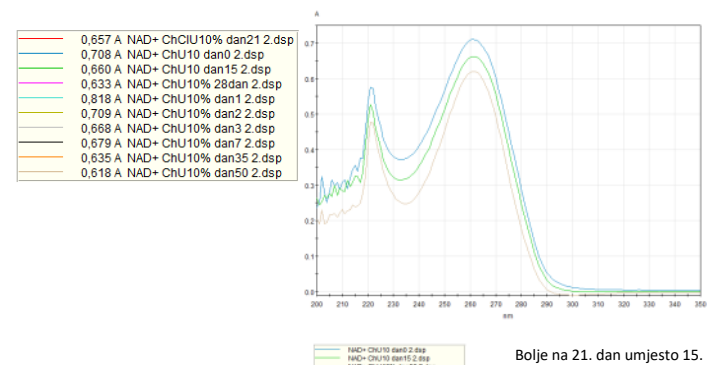
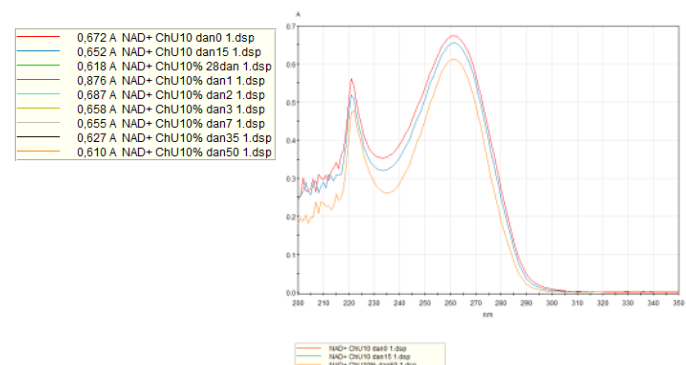
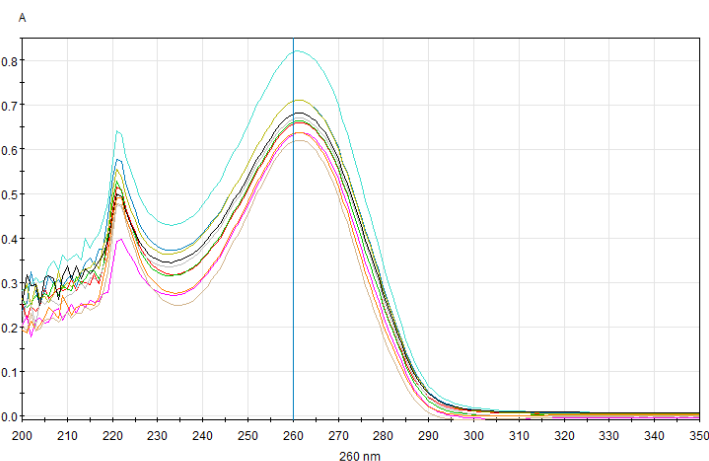
NAD⁺ u ChCl:U (1:2) - 10% H₂O

- pH= 8,66

Paralela 1



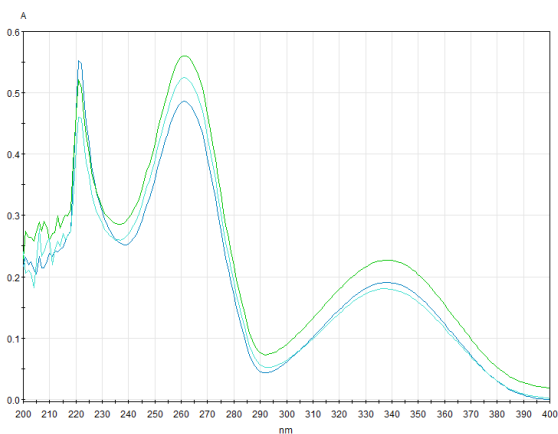
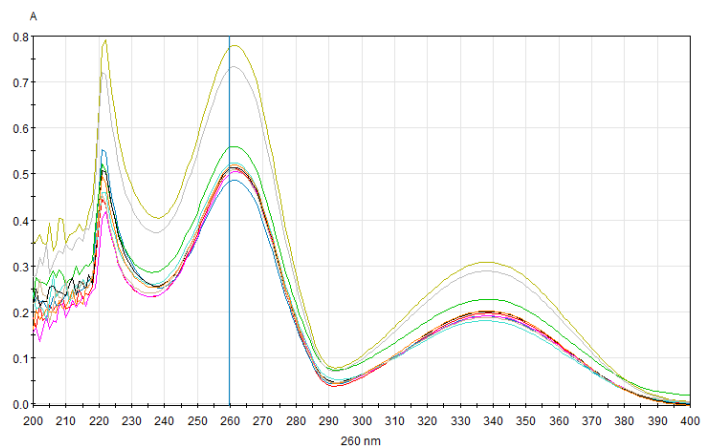
Paralela 2



Bolje na 21. dan umjesto 15.

NADH u ChCl:U (1:2) - 10% H₂O

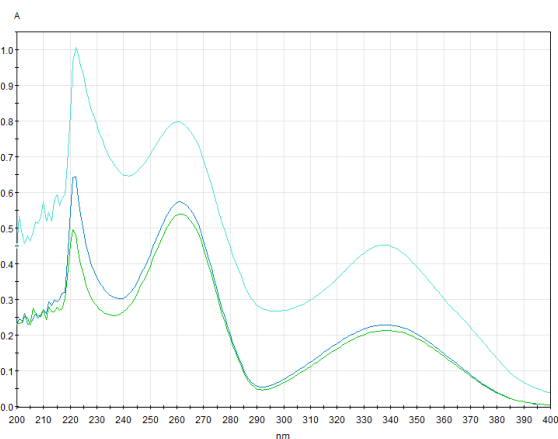
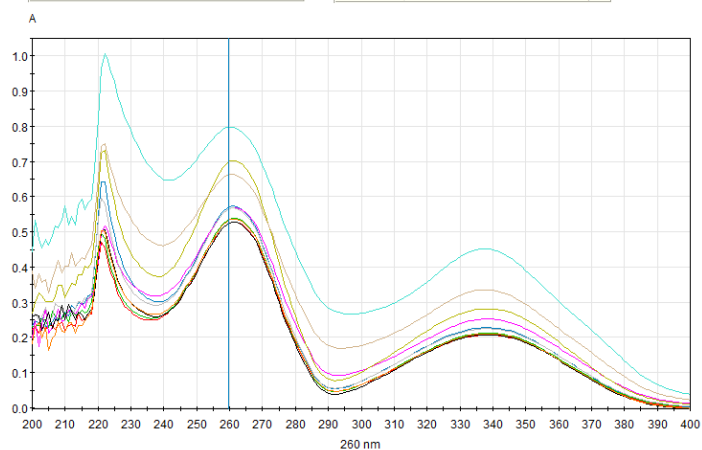
- pH= 8,66



Paralela 1

0.508 A NADH ChClU10% dan21 1.dsp	0.197 A NADH ChClU10% dan21 1.dsp
0.484 A NADH ChU10 dan0 1.dsp	0.191 A NADH ChU10 dan0 1.dsp
0.559 A NADH ChU10 dan15 1.dsp	0.227 A NADH ChU10 dan15 1.dsp
0.502 A NADH ChU10% 28dan 1_1.dsp	0.191 A NADH ChU10% 28dan 1_1.dsp
0.523 A NADH ChU10% 50dan 1.dsp	0.181 A NADH ChU10% 50dan 1.dsp
0.778 A NADH ChU10% dan1 1.dsp	0.308 A NADH ChU10% dan1 1.dsp
0.731 A NADH ChU10% dan2 1.dsp	0.289 A NADH ChU10% dan2 1.dsp
0.512 A NADH ChU10% dan3 1.dsp	0.201 A NADH ChU10% dan3 1.dsp
0.517 A NADH ChU10% dan7 1.dsp	0.202 A NADH ChU10% dan7 1.dsp
0.506 A NADH ChU10% dan35 1.dsp	0.187 A NADH ChU10% dan35 1.dsp

NADH ChU10 dan0 1.dsp
NADH ChU10 dan15 1.dsp
NADH ChU10% 50dan 1.dsp



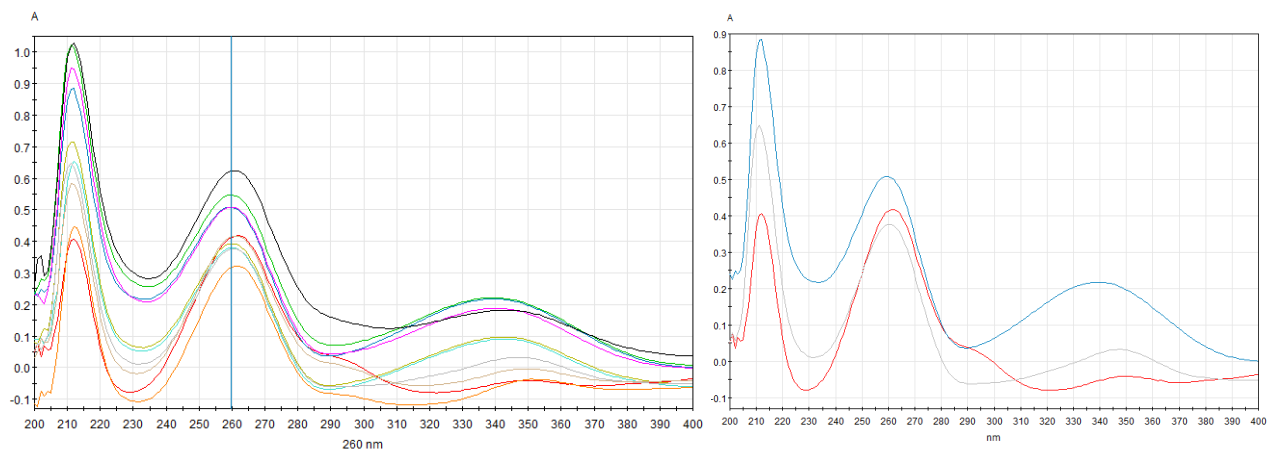
Paralela 2

0.526 A NADH ChClU10% dan21 2.dsp	0.207 A NADH ChClU10% dan21 2.dsp
0.571 A NADH ChU10 dan0 2.dsp	0.228 A NADH ChU10 dan0 2.dsp
0.537 A NADH ChU10 dan15 2.dsp	0.212 A NADH ChU10 dan15 2.dsp
0.507 A NADH ChU10% 28dan 2_1.dsp	0.252 A NADH ChU10% 28dan 2_1.dsp
0.798 A NADH ChU10% 50dan 2.dsp	0.452 A NADH ChU10% 50dan 2.dsp
0.700 A NADH ChU10% dan1 2.dsp	0.281 A NADH ChU10% dan1 2.dsp
0.566 A NADH ChU10% dan2 2.dsp	0.225 A NADH ChU10% dan2 2.dsp
0.525 A NADH ChU10% dan3 2.dsp	0.208 A NADH ChU10% dan3 2.dsp
0.535 A NADH ChU10% dan7 2.dsp	0.210 A NADH ChU10% dan7 2.dsp
0.663 A NADH ChU10% dan35 2.dsp	0.335 A NADH ChU10% dan35 2.dsp

NADH ChU10 dan0 2.dsp
NADH ChU10 dan15 2.dsp
NADH ChU10% 50dan 2.dsp

NADH u GlyPP

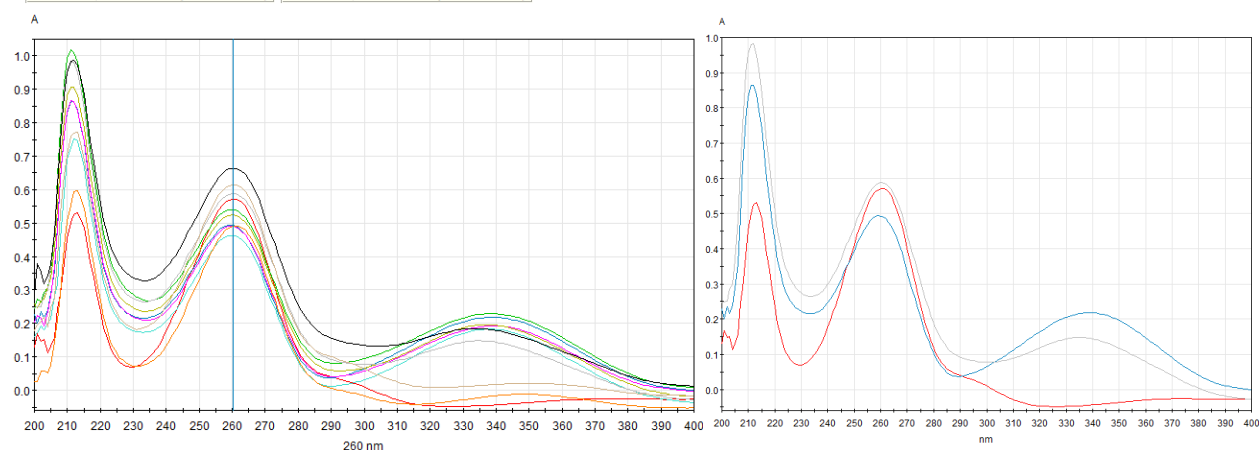
- pH= 9,1



Paralela 1

0.414 A NADH GlyPP 50dan 1.dsp	-0.056 A NADH GlyPP 50dan 1.dsp
0.507 A NADH GlyPP dan0 1.dsp	0.217 A NADH GlyPP dan0 1.dsp
0.547 A NADH GlyPP dan1 1.dsp	0.221 A NADH GlyPP dan1 1.dsp
0.508 A NADH GlyPP dan2 1.dsp	0.187 A NADH GlyPP dan2 1.dsp
0.380 A NADH GlyPP dan3 1.dsp	0.087 A NADH GlyPP dan3 1.dsp
0.393 A NADH GlyPP dan7 1.dsp	0.093 A NADH GlyPP dan7 1.dsp
0.377 A NADH GlyPP dan15 1.dsp	0.019 A NADH GlyPP dan15 1.dsp
0.624 A NADH GlyPP dan21 1.dsp	0.179 A NADH GlyPP dan21 1.dsp
0.318 A NADH GlyPP dan28 1.dsp	-0.072 A NADH GlyPP dan28 1.dsp
0.415 A NADH GlyPP dan35 1.dsp	-0.022 A NADH GlyPP dan35 1.dsp

NADH GlyPP 50dan 1.dsp
NADH GlyPP dan0 1.dsp
NADH GlyPP dan15 1.dsp



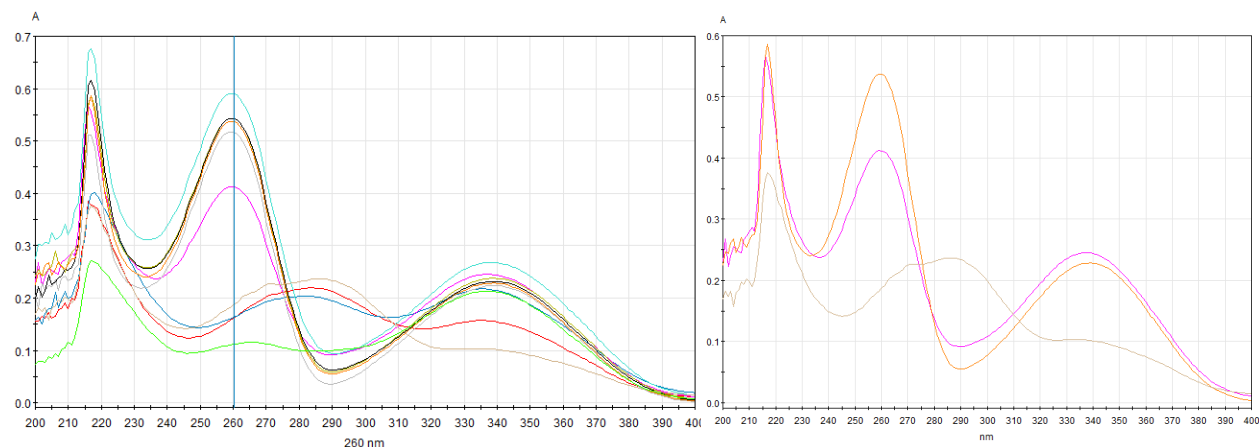
Paralela 2

0.570 A NADH GlyPP 50dan 2.dsp	-0.045 A NADH GlyPP 50dan 2.dsp
0.493 A NADH GlyPP dan0 2.dsp	0.218 A NADH GlyPP dan0 2.dsp
0.540 A NADH GlyPP dan1 2.dsp	0.229 A NADH GlyPP dan1 2.dsp
0.490 A NADH GlyPP dan2 2.dsp	0.192 A NADH GlyPP dan2 2.dsp
0.463 A NADH GlyPP dan3 2.dsp	0.183 A NADH GlyPP dan3 2.dsp
0.524 A NADH GlyPP dan7 2.dsp	0.196 A NADH GlyPP dan7 2.dsp
0.588 A NADH GlyPP dan15 2.dsp	0.147 A NADH GlyPP dan15 2.dsp
0.664 A NADH GlyPP dan21 2.dsp	0.182 A NADH GlyPP dan21 2.dsp
0.491 A NADH GlyPP dan28 2.dsp	-0.018 A NADH GlyPP dan28 2.dsp
0.615 A NADH GlyPP dan35 2.dsp	0.016 A NADH GlyPP dan35 2.dsp

NADH GlyPP 50dan 2.dsp
NADH GlyPP dan0 2.dsp
NADH GlyPP dan15 2.dsp

NADH u TRIS

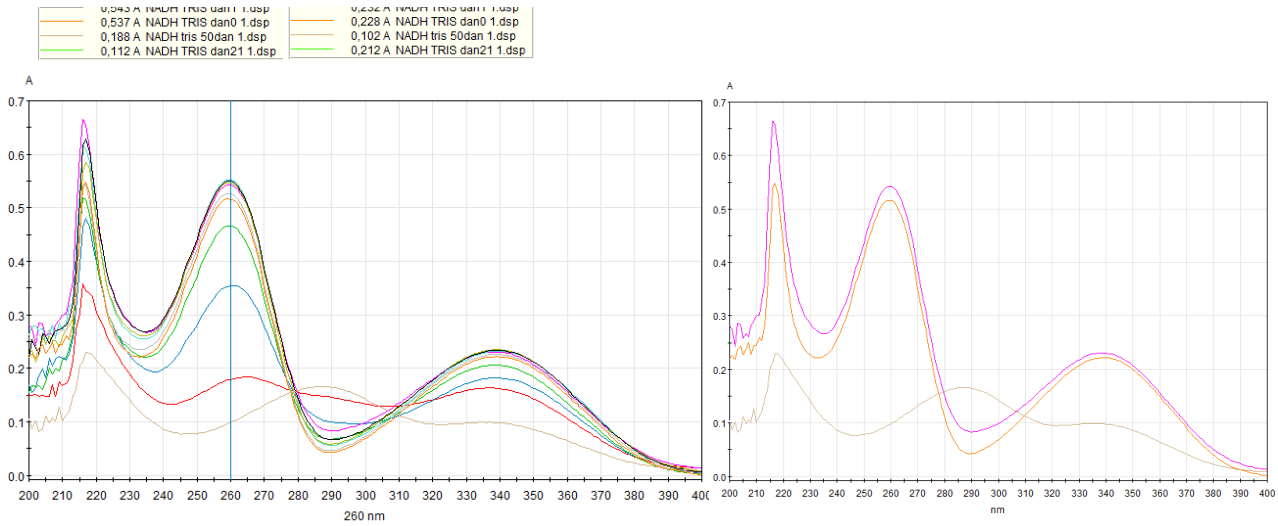
- pH= 9,5



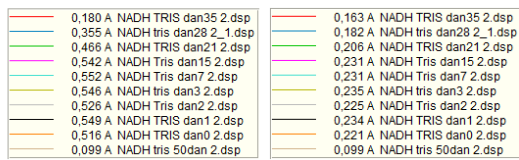
Paralela 1

0.161 A NADH TRIS dan35 1.dsp	0.156 A NADH TRIS dan35 1.dsp
0.163 A NADH tris dan28 1_1.dsp	0.216 A NADH tris dan28 1_1.dsp
0.412 A NADH Tris dan15 1.dsp	0.245 A NADH Tris dan15 1.dsp
0.590 A NADH Tris dan7 1.dsp	0.268 A NADH Tris dan7 1.dsp
0.543 A NADH tris dan3 1.dsp	0.238 A NADH tris dan3 1.dsp
0.517 A NADH Tris dan2 1.dsp	0.223 A NADH Tris dan2 1.dsp
0.543 A NADH TRIS dan1 1.dsp	0.232 A NADH TRIS dan1 1.dsp
0.537 A NADH TRIS dan0 1.dsp	0.228 A NADH TRIS dan0 1.dsp
0.188 A NADH tris 50dan 1.dsp	0.102 A NADH tris 50dan 1.dsp
0.112 A NADH TRIS dan21 1.dsp	0.212 A NADH TRIS dan21 1.dsp

NADH Tris dan15 1.dsp
NADH TRIS dan0 1.dsp
NADH tris 50dan 1.dsp

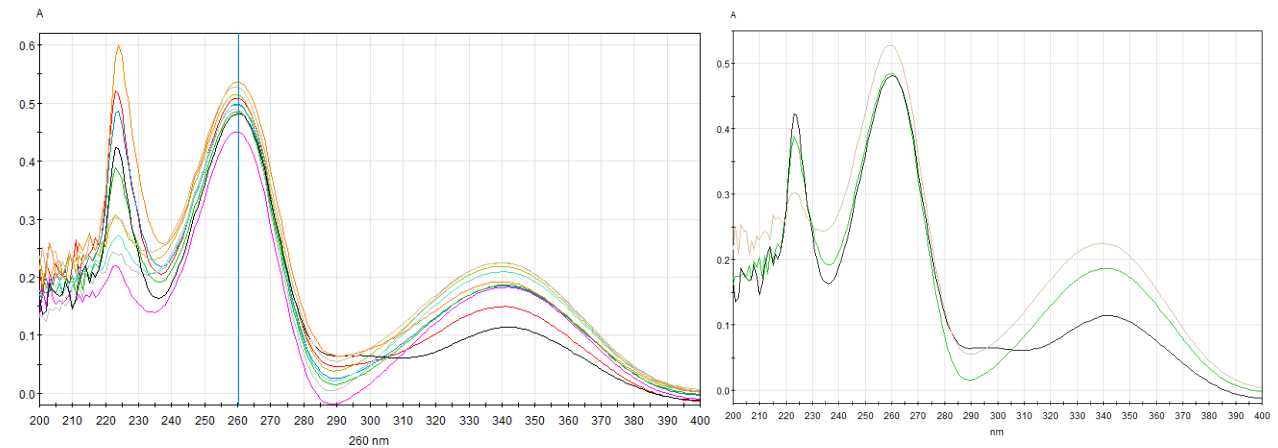


Paralela 2

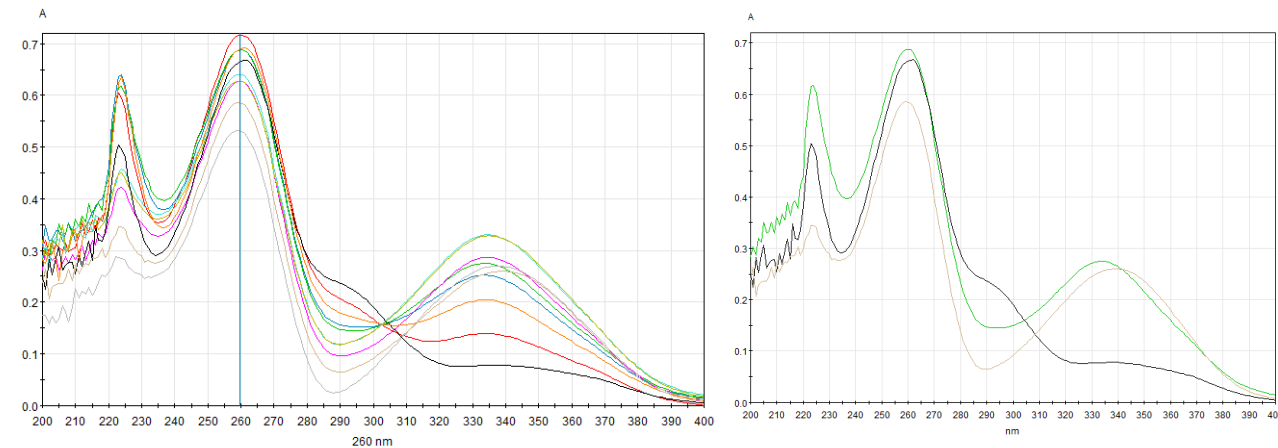
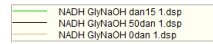
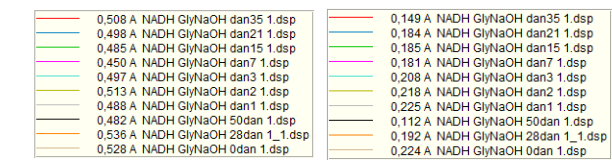


NADH u Gly NaOH

- pH= 9,98



Paralela 1



Paralela 2

0,688 A NADH GlyNaOH dan21 2.dsp
0,688 A NADH GlyNaOH dan15 2.dsp
0,627 A NADH GlyNaOH dan7 2.dsp
0,640 A NADH GlyNaOH dan3 2.dsp
0,627 A NADH GlyNaOH dan2 2.dsp
0,530 A NADH GlyNaOH dan1 2.dsp
0,665 A NADH GlyNaOH 50dan 2.dsp
0,590 A NADH GlyNaOH 28dan 2_1.dsp
0,585 A NADH GlyNaOH 0dan 2.dsp

0,247 A NADH GlyNaOH dan21 2.dsp
0,270 A NADH GlyNaOH dan15 2.dsp
0,283 A NADH GlyNaOH dan7 2.dsp
0,326 A NADH GlyNaOH dan3 2.dsp
0,325 A NADH GlyNaOH dan2 2.dsp
0,269 A NADH GlyNaOH dan1 2.dsp
0,078 A NADH GlyNaOH 50dan 2.dsp
0,201 A NADH GlyNaOH 28dan 2_1.dsp
0,259 A NADH GlyNaOH 0dan 2.dsp

NADH GlyNaOH 0dan 2.dsp